

INDLEDNING

Begreber og statistik

Dansk Kriminalistforening

28. oktober 2014

Britta Kyvsgaard

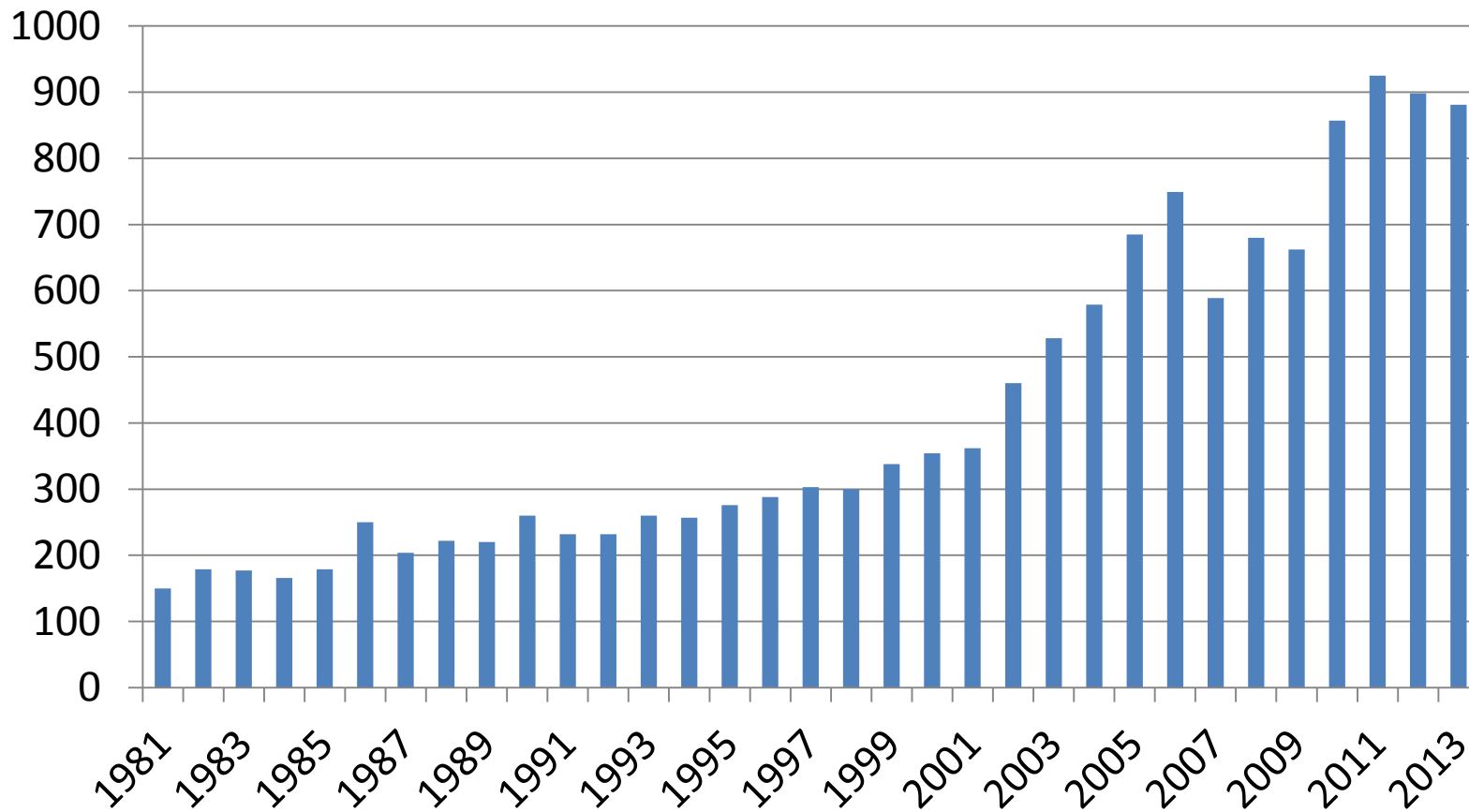


JUSTITSMINISTERIET

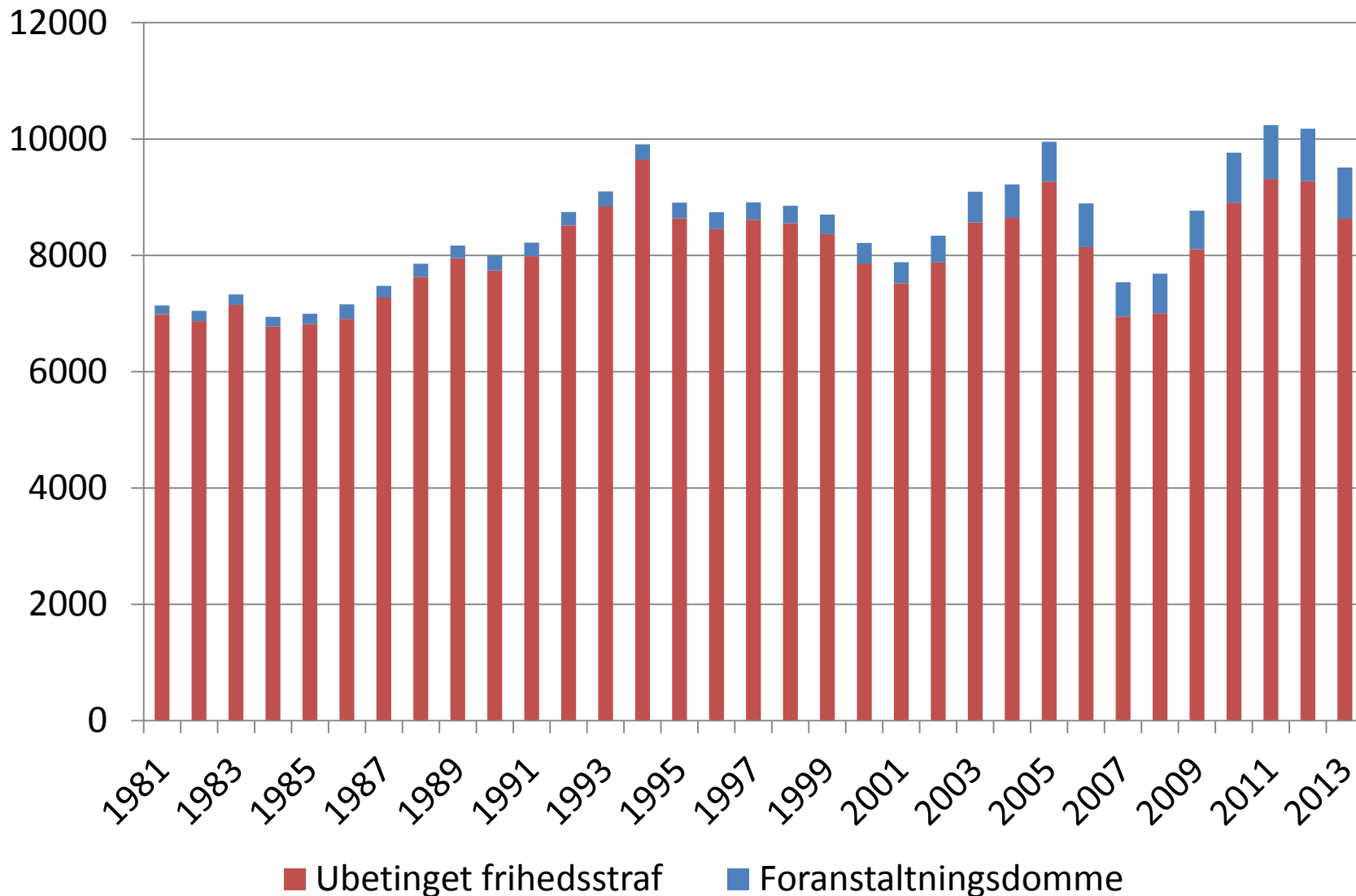
Lidt jura

- Utilregnelig på gerningstidspunktet
- Foranstaltning
- Psykisk syge, mentalt handicappede og § 69
- Typer af foranstaltning
- Tidsbegrænsning

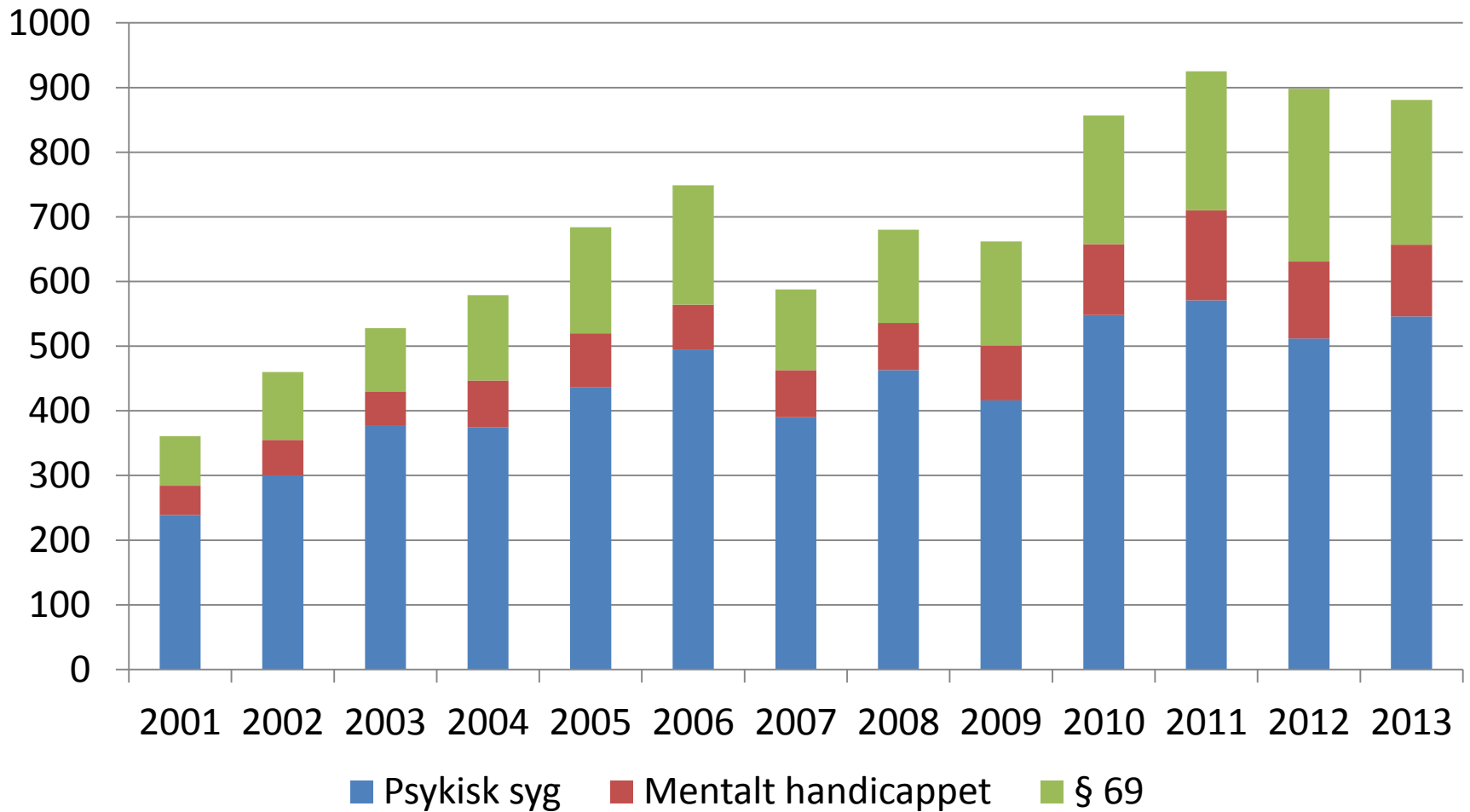
Foranstaltningsdomme 1981-2013



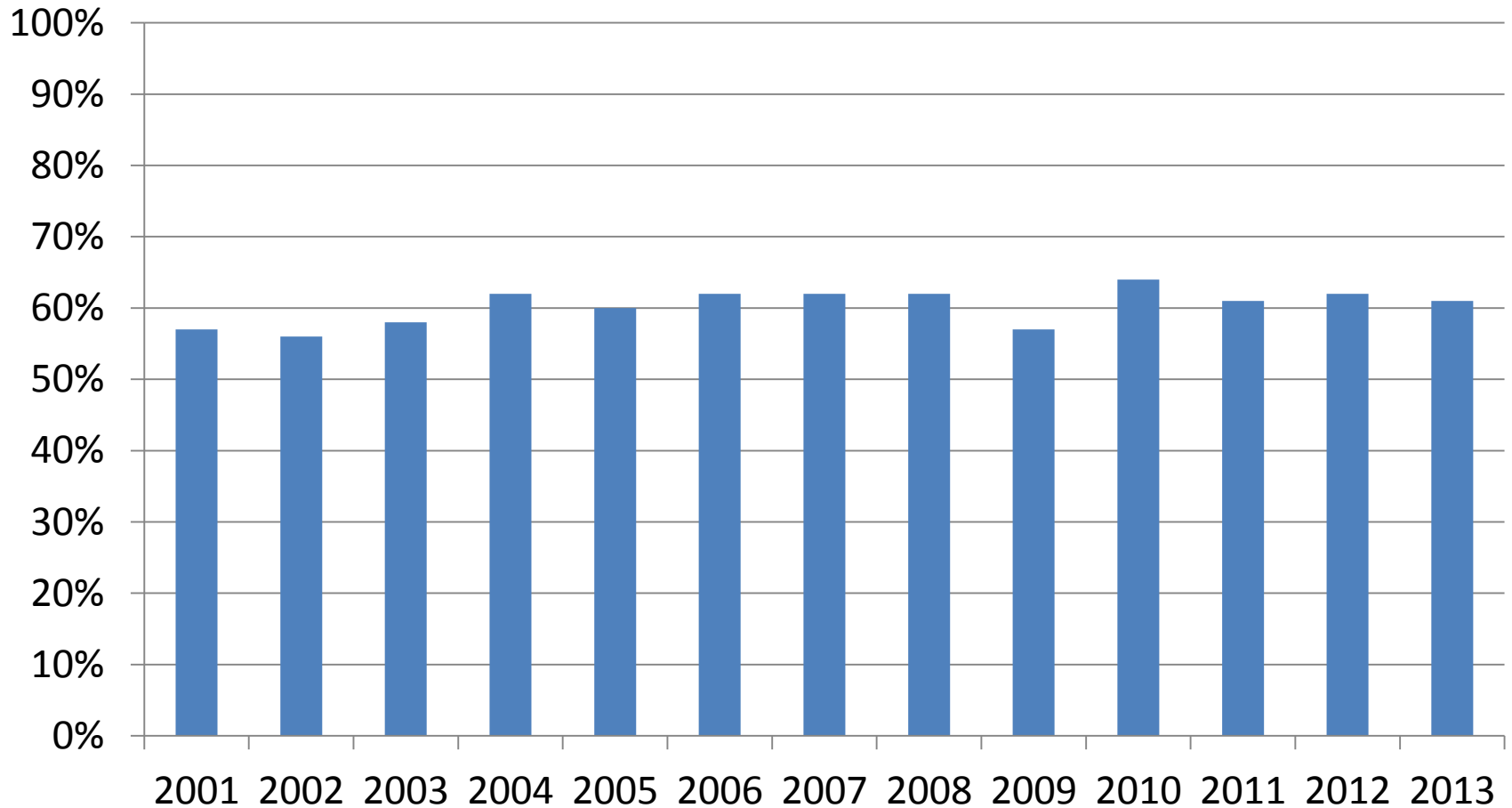
Afgørelser straffelovsovertrædelser



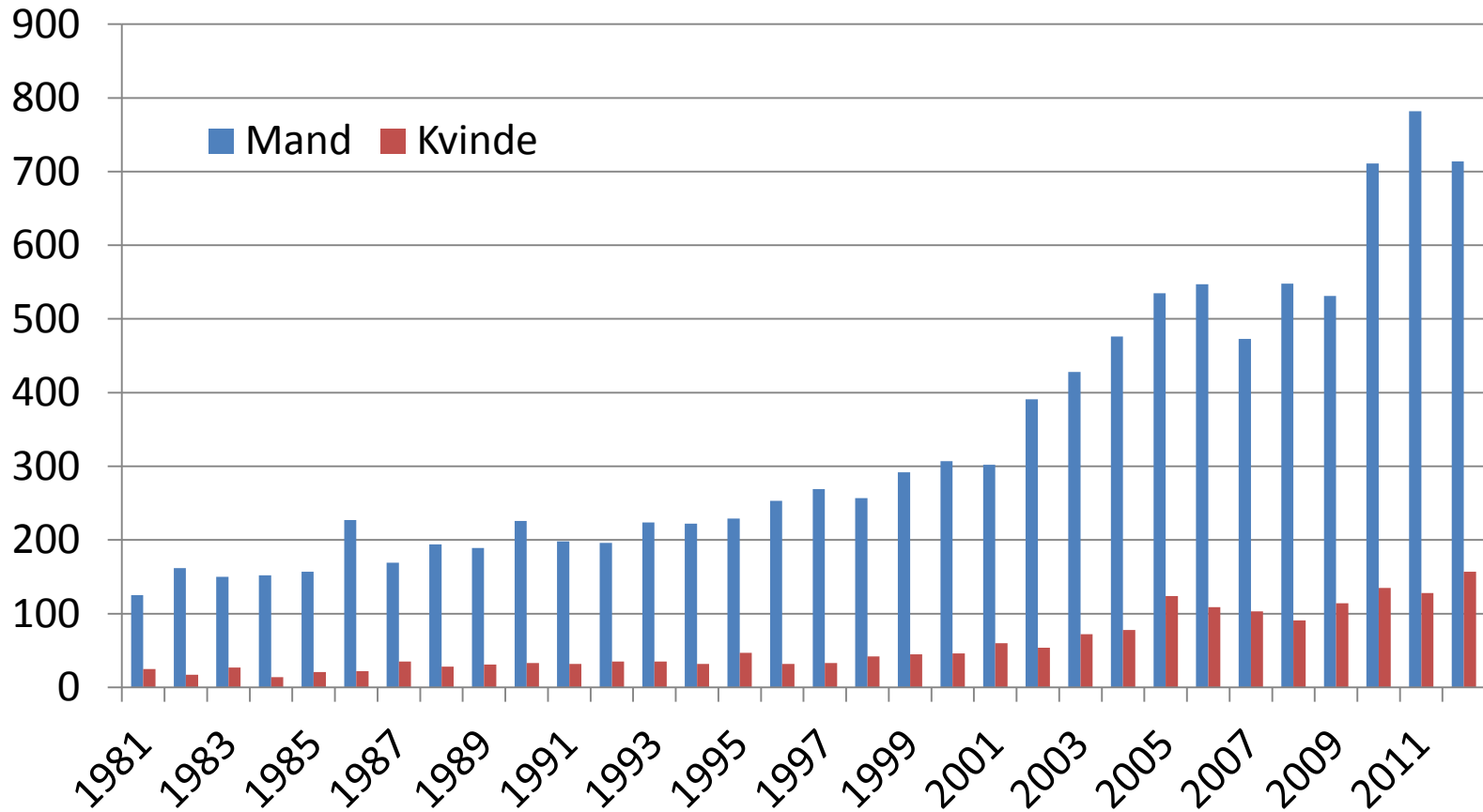
Foranstaltningsdomme 2001-2013



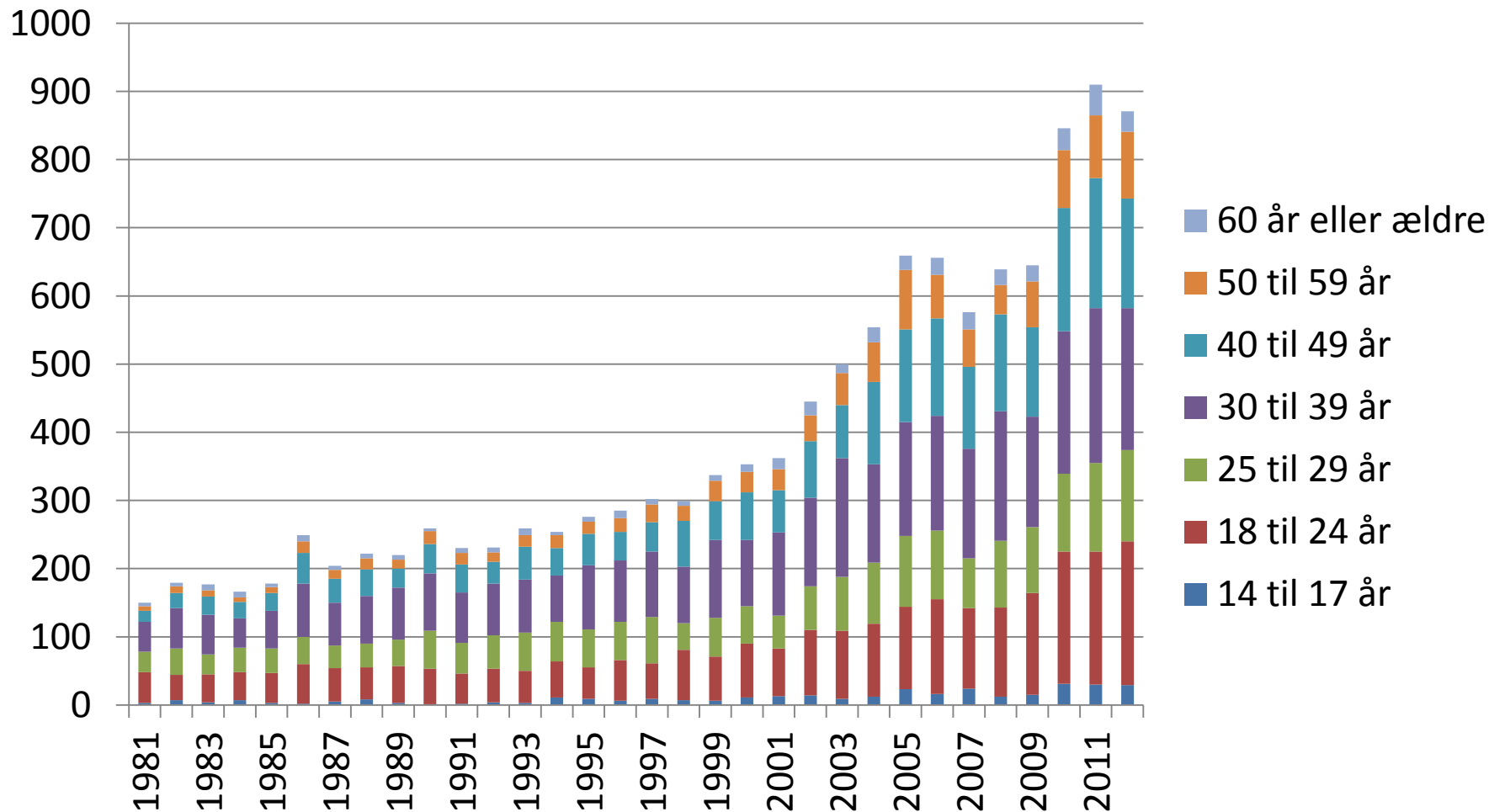
Andel domme med tidsbegrænsning



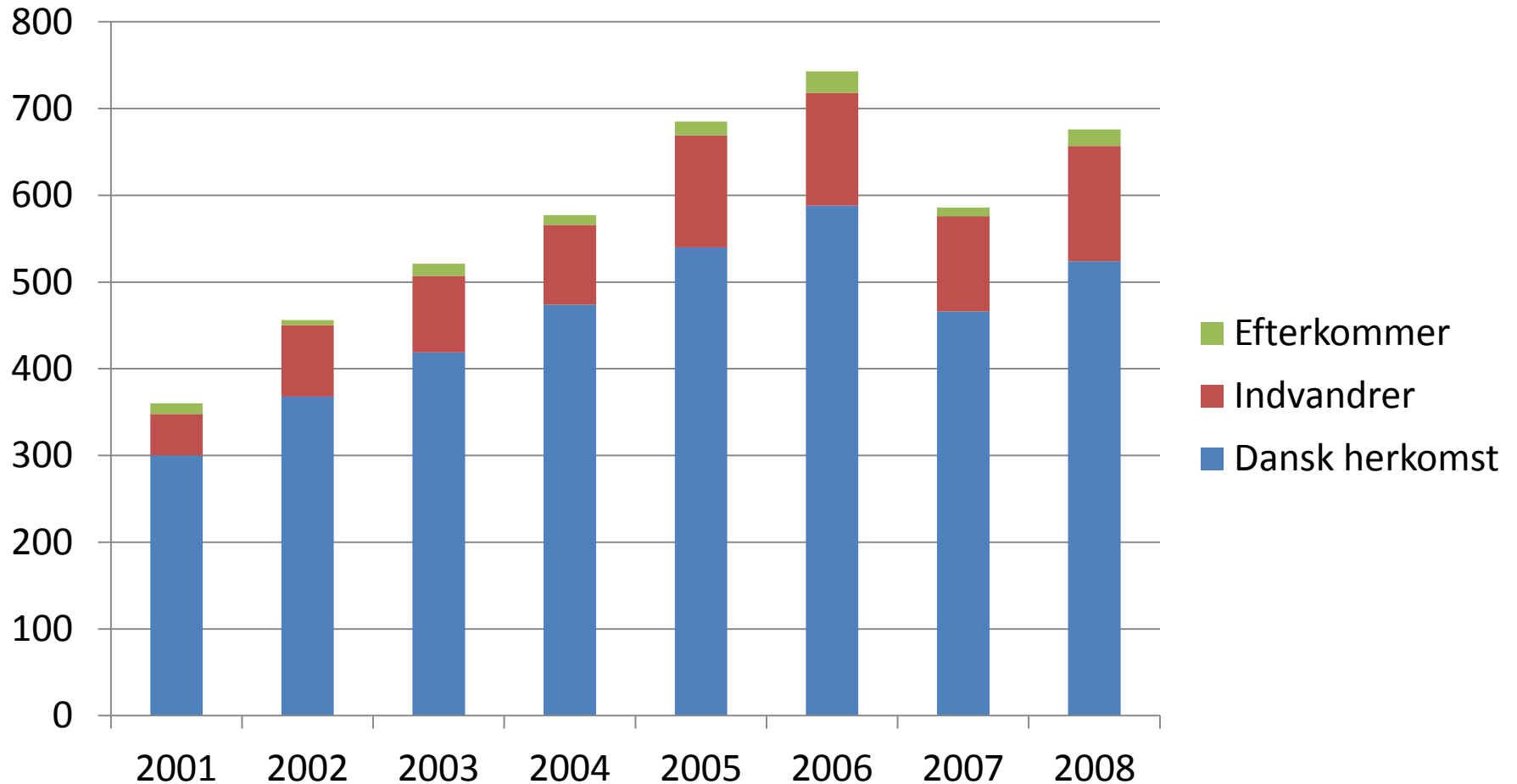
Foranstaltningsdomme og køn 1981-2012



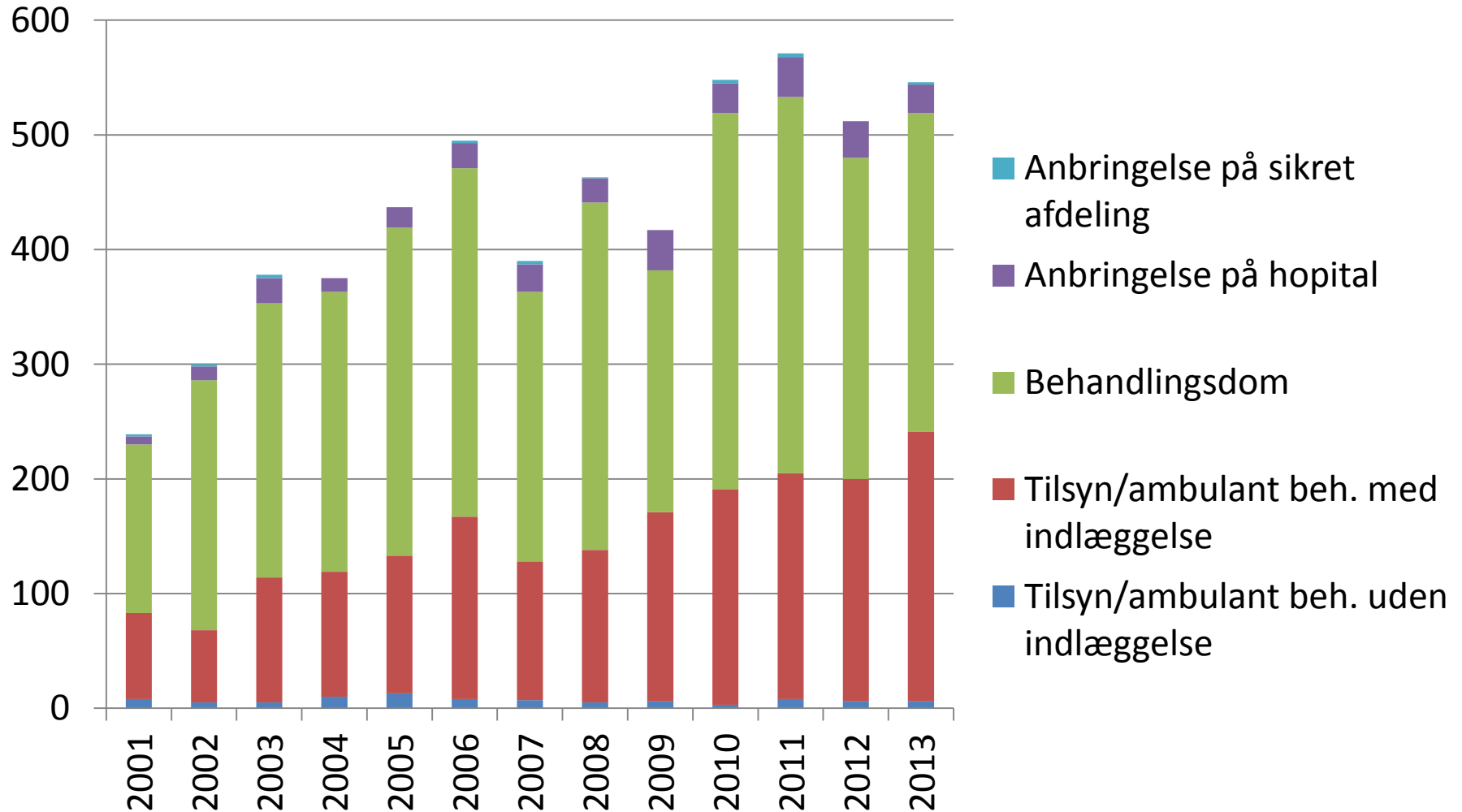
Foranstaltningsdomme og alder 1981-2012



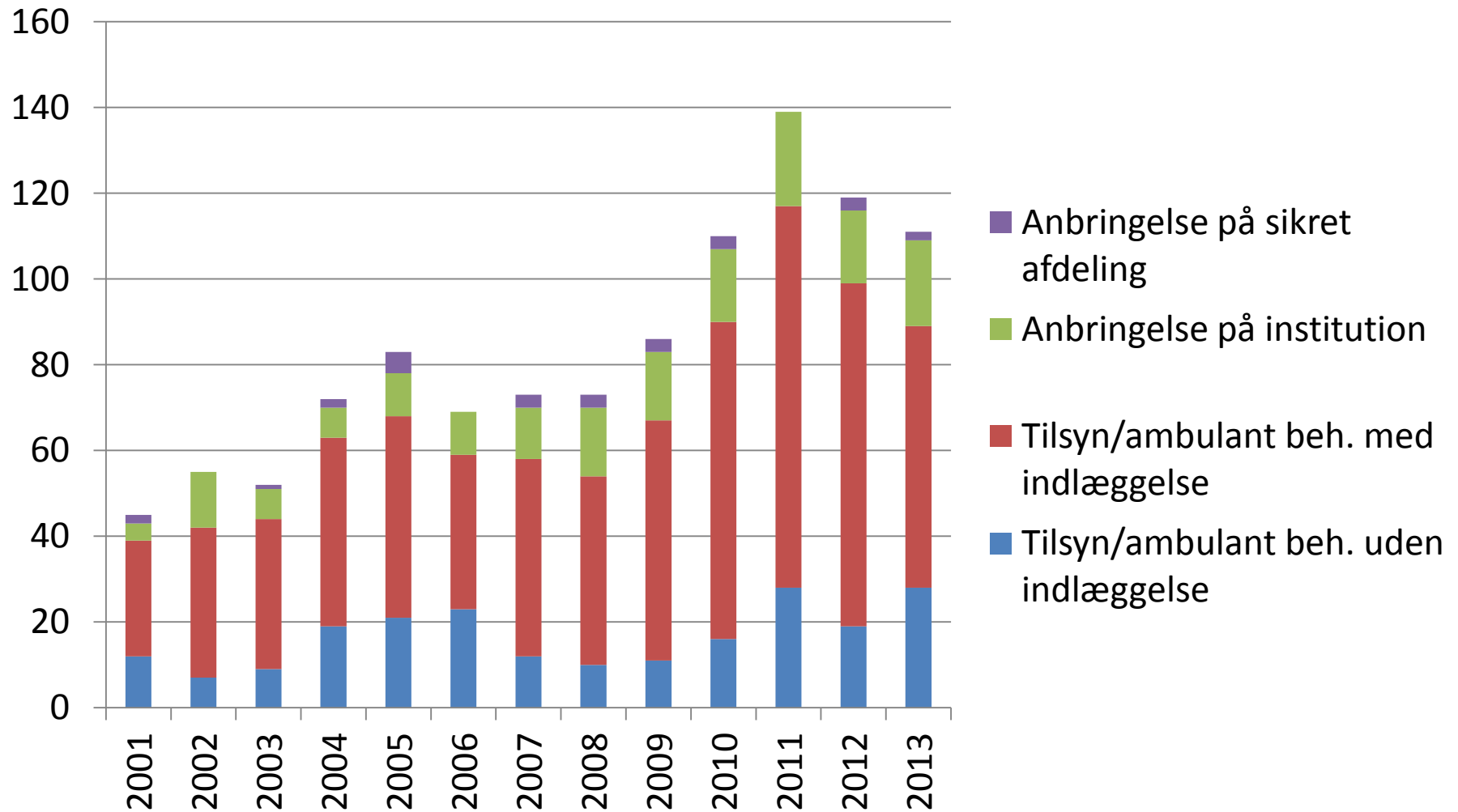
Foranstaltningsdomme og etnicitet 2001-2008



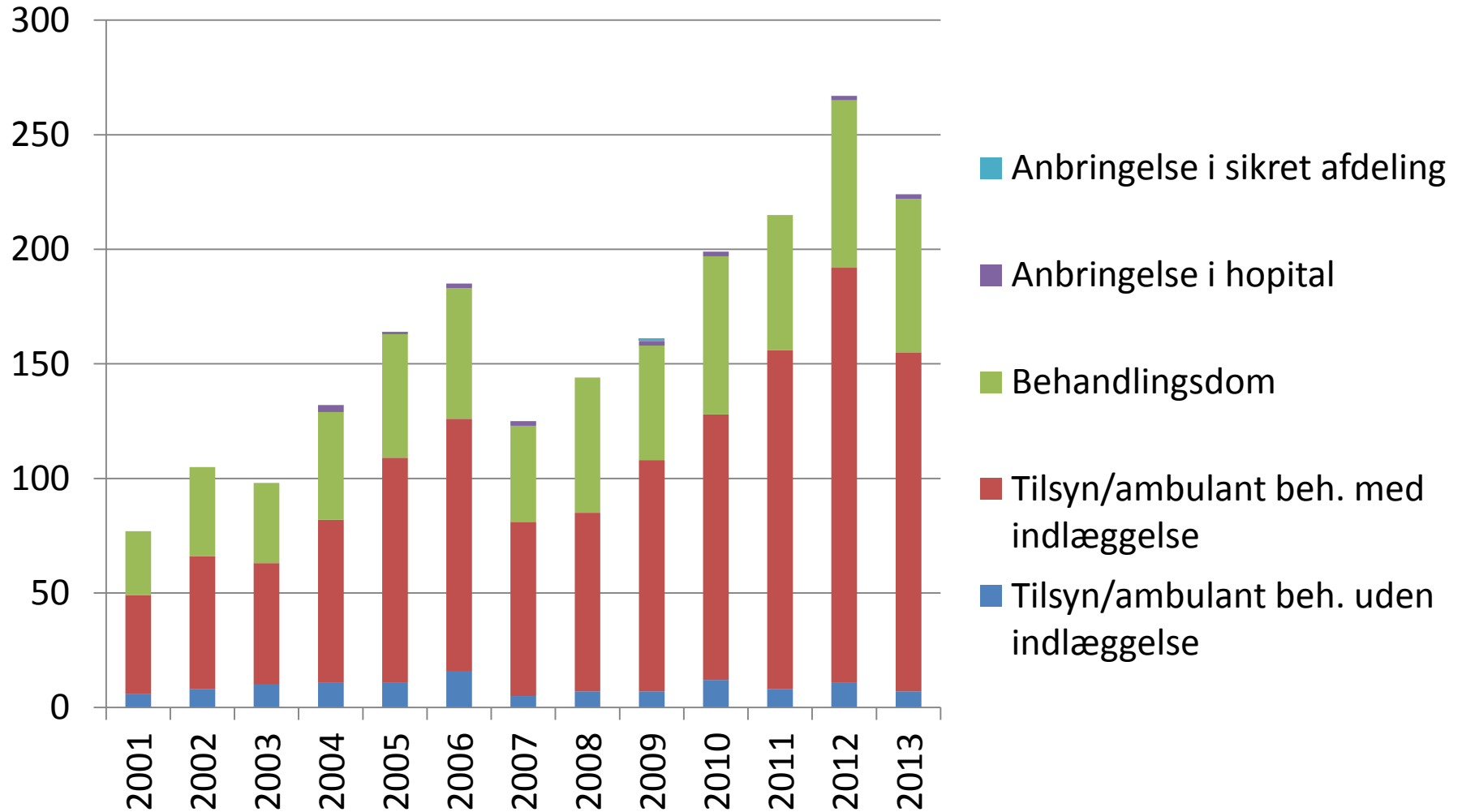
Dommens art, psykisk syge



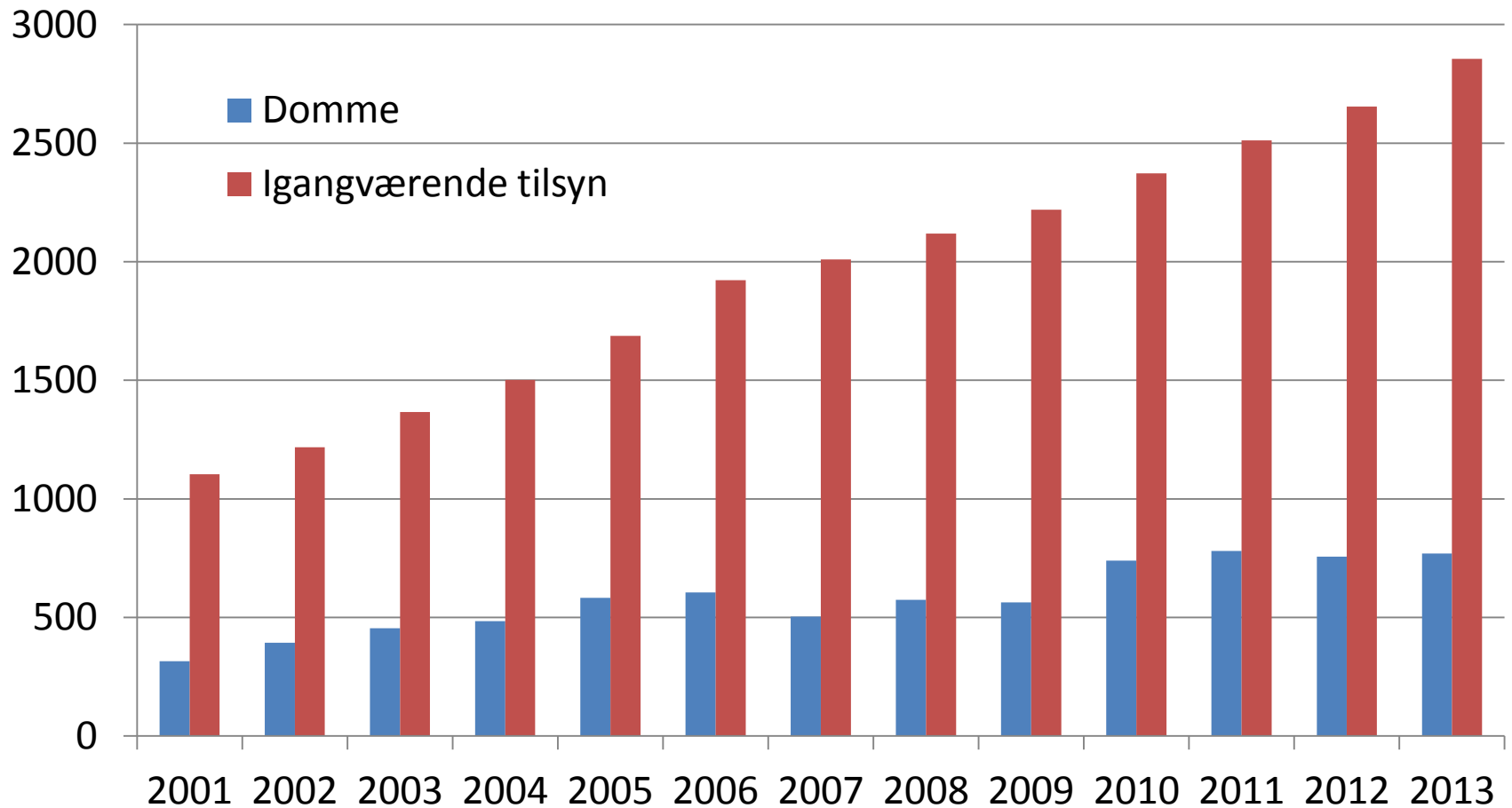
Dommens art, mentalt handicappede



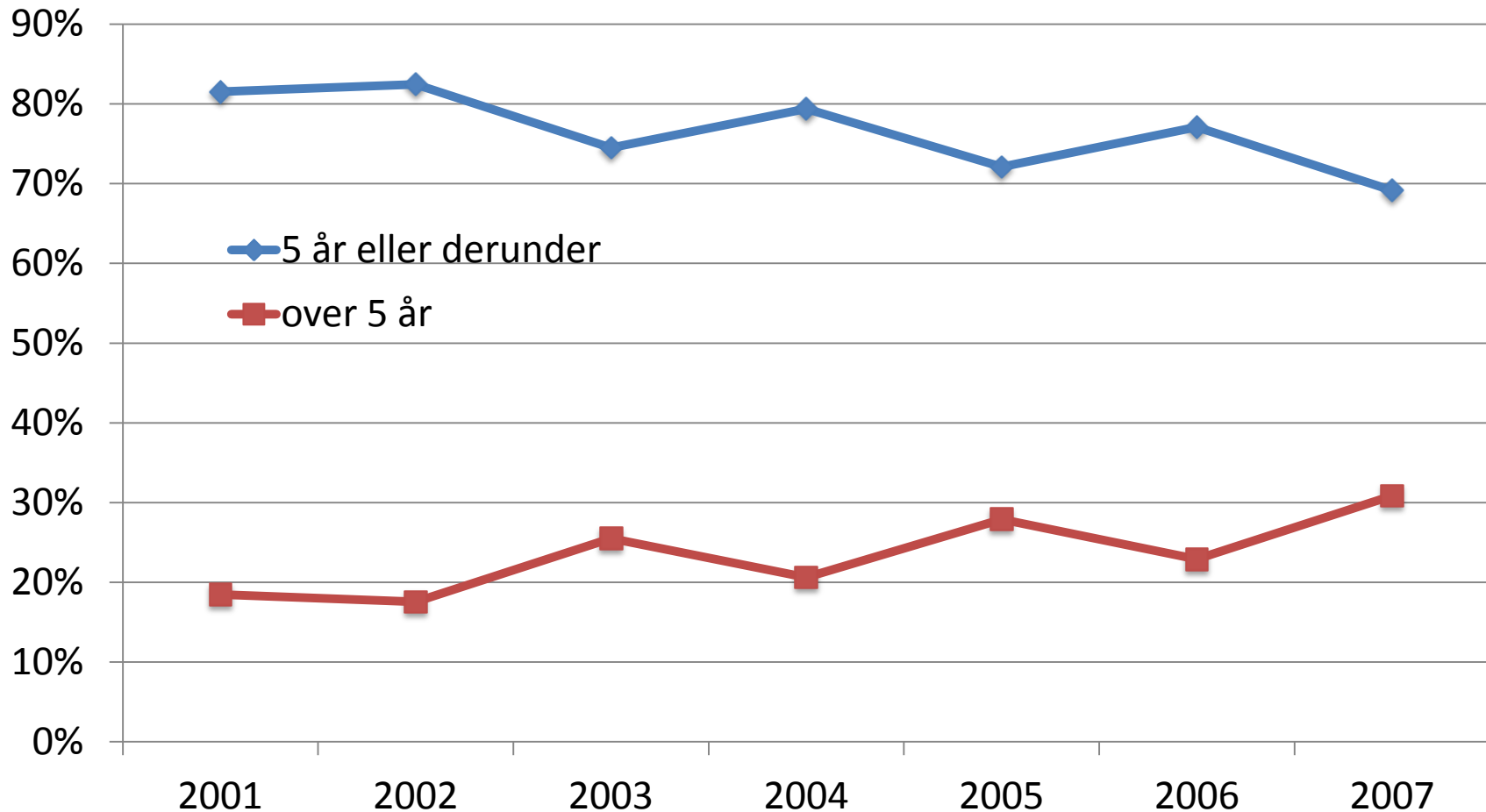
Dommens art, § 69



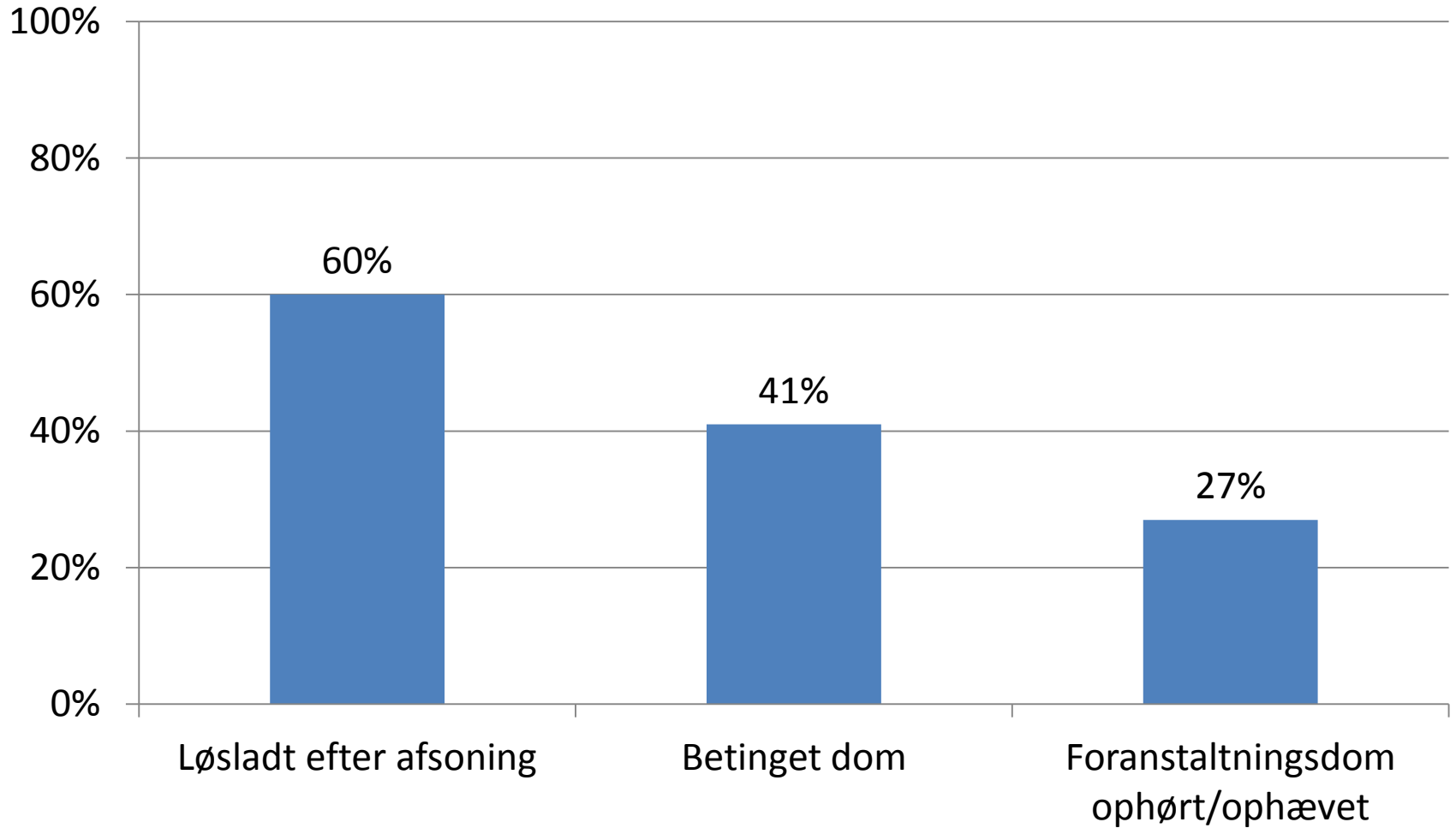
Antal domme og antal igangværende tilsyn (psykisk syge og § 69)



Varighed, 200-2007 (psykisk syge og § 69)



Recidivprocent



Recidivets omfang

